

River's Edge Fabric Company

Block of the Month - May 2010

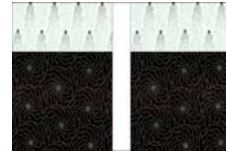
Use a SCANT 1/4" seam allowance

Fabric 1
Two - 4 1/2" squares
Four - 2 1/2" squares

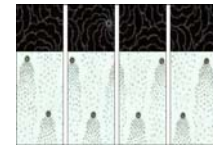
Fabric 2
Two - 4 1/2" squares

Background Fabric
Eight - 2 1/2" x 4 1/2" rectangles

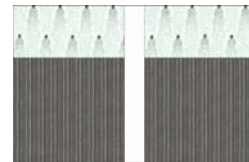
Sew a background rectangle to ONE side of the 4 1/2" Fabric 1 squares.



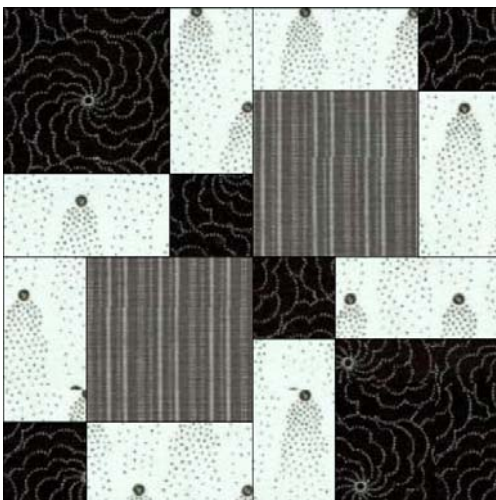
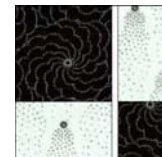
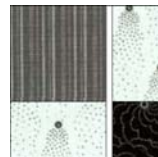
Sew a 2 1/2" Fabric 1 square to ONE end of the background rectangles.



Sew a background rectangle to ONE side of the Fabric 2 squares.



Sew pieces into small blocks.



Finished block
should measure 12 1/2"